

# SOUTHEASTERN ARIZONA PARTNERSHIPS A KEY TO SCIENCE OUTREACH



Presentation at the RAIN Retreat

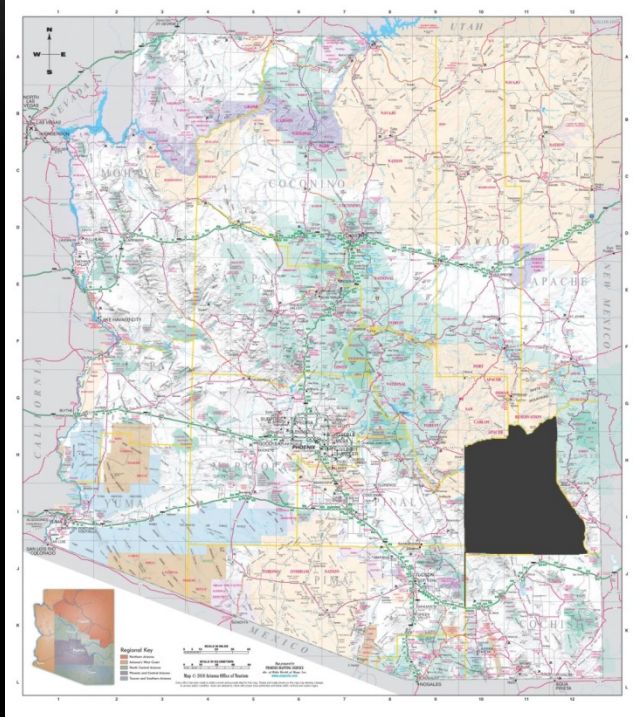
4/21/2017



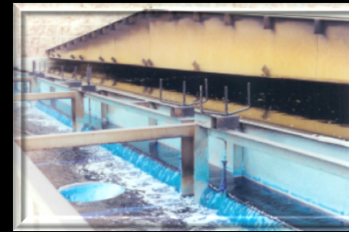
- is the **oldest member of the Arizona Community College system** and enjoys a rich tradition of educational excellence, achievement and commitment.
- offers **60 Associate and 46 Certificate Programs** from 7 campus locations in Southeastern Arizona.
- 8660 full time students
- 5646 part time students
- There are 19 high schools in the combined three-county service area with 1071 graduates in 2015.
  - 562 dual enrollment students
  - EAC attracts 27.5% of all high school graduates in our service area

# THE GILA VALLEY

GRAHAM COUNTY, ARIZONA



**Astronomy**  
**Agriculture**  
**Education**  
**Mining**



# EASTERN ARIZONA SCIENCE INITIATIVE

- 1<sup>st</sup> Step - Developed a charter – Non profit
- Monthly meetings at Eastern Arizona College
- Prepared a list of Objectives
  - **Professional Development (K-12 teachers)**
  - **Establish Educational Partnerships**
  - **Community Outreach**
    - **Science Camps**
    - **Regional Science Fair**
    - **Gila Valley Health and Safety Festival**



# PROFESSIONAL DEVELOPMENT (ENHANCING INSTRUCTOR QUALIFICATIONS)

- Southeastern Arizona Teachers Academy

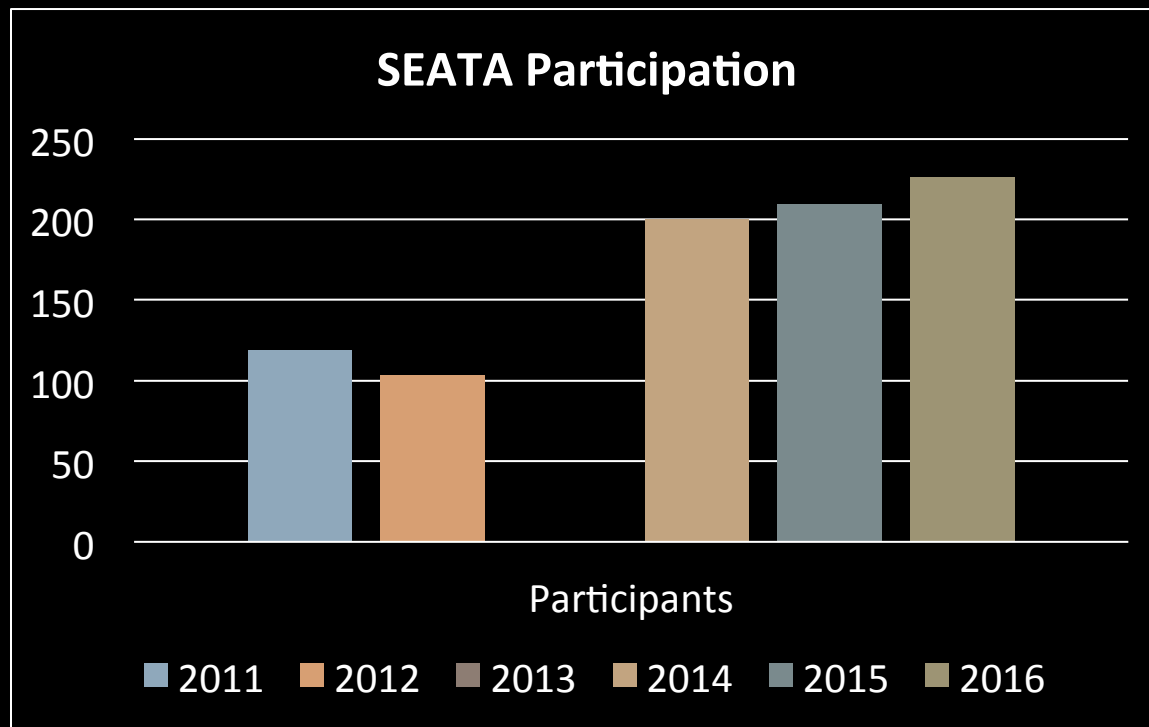
Co-Sponsored by Graham and Greenlee County School Superintendents

- Graham County School Office Fund
- Arizona Department of Education
- United Way of the Gila Valley
- Healthy Families/Healthy Youth (Governor's Office) grant
- Arizona Science Teachers Association Conference
- STEM = Integration & Innovation Unconference
- 3-Dimensional Instruction for All Workshop

# SOUTHEASTERN ARIZONA TEACHERS ACADEMY (PROFESSIONAL DEVELOPMENT)



Break-out sessions are planned with a focus on best practices across the curriculum. Attendees earn up to 24 hours of professional development credit. SEATA is open to certified educators, early childhood education providers and pre-service educators.



# SOUTHEASTERN ARIZONA TEACHERS ACADEMY (SEATA) PROVIDES LOCAL TEACHERS WITH A 4-DAY VENUE TO

- study the new math/science standards
- learn new ways to effectively present core content in their home classrooms.
- Something for everyone (PreK-3, 4-6, 7-8, and high school)



# EASTERN ARIZONA SCIENCE INITIATIVE

- **Professional Development (K-12 teachers)**
- **Establish Educational Partnerships**
- **Community Outreach**
  - **Science Camps**
  - **Engineering Day – Chemistry Adventure**
  - **Gila Valley Health and Safety Festival**



# ARIZONA STEM NETWORK

- The Arizona STEM Network, led by Science Foundation Arizona, is a collaboration between business, educators, government and philanthropy sharing a common agenda to graduate more Arizona students prepared for the global economy.



COOPERATIVE EFFORT - A RANARIUM WAS BUILT TO PROVIDE A NURSERY HABITAT FOR THE CHIRICAHUA LEOPARD FROG, A THREATENED AND ENDANGERED SPECIES.

- **High School science students**
- **Boy Scouts**
- **Eastern Arizona College students**
- **Grant from the U.S. Fish and Wildlife Service**

# CHIRICAHUA LEOPARD FROG RANARIUM







OUR PARTNERSHIPS HELP  
PROVIDE HUNDREDS OF  
HIGH SCHOOL STUDENTS  
OPPORTUNITIES TO WORK  
AND LEARN IN  
COOPERATIVE PROJECTS  
WITH OUR EAC STUDENTS.

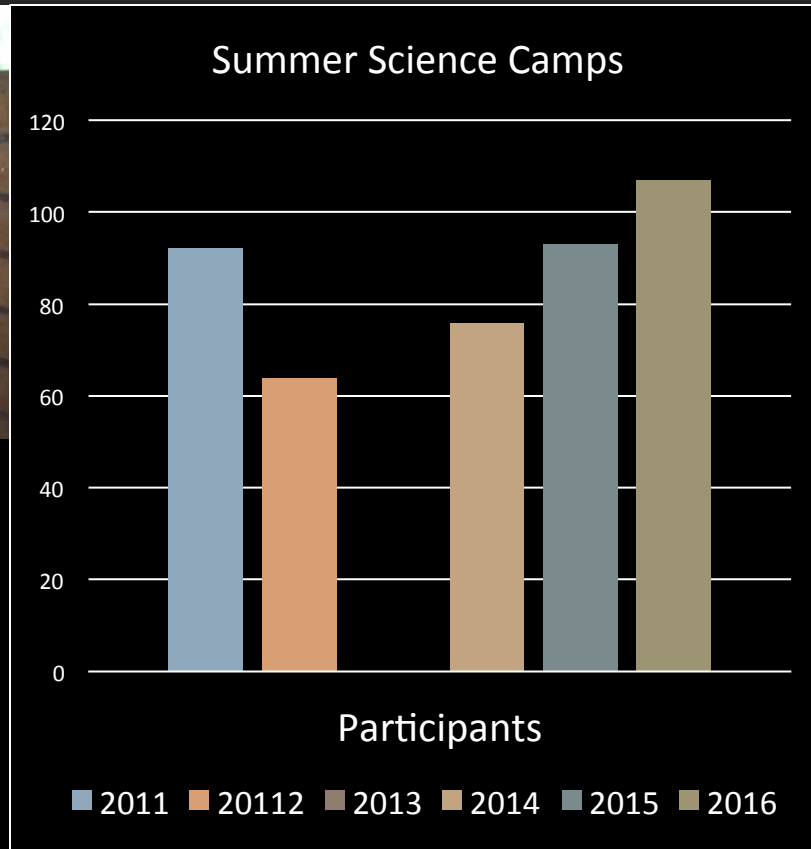


# EASTERN ARIZONA SCIENCE INITIATIVE

- **Professional Development (K-12 teachers)**
  - **Establish Educational Partnerships**
  - **Community Outreach**
    - **Science Camps**
    - **Engineering Day – Chemistry Adventure**
    - **Regional Science Fair**
    - **Gila Valley Health and Safety Festival**
-



# EASI SUMMER SCIENCE CAMP



# 2014 - 2016 SUMMER SCIENCE CAMPS

	Total # of participants	# Female	# Male	# Hispanic	# Native American	# Asian	# African American	# Hawaiian/ Pacific I.	# White	# Other/Unknown	# grade 6-8 students	# HS Students
<b>Summer Science Camps (2014)</b>	<b>76</b>	<b>51</b>	<b>25</b>	<b>8</b>	<b>6</b>	<b>0</b>	<b>1</b>	<b>0</b>	<b>61</b>	<b>0</b>	<b>58</b>	<b>18</b>
Summer Science Camps (EASI)	64	29	35	9	11	0	0	0	44	0	53	11
Tonto Creek Camp	29	15	14	4	5	0	0	0	20	0	24	5
<b>Totals (2015)</b>	<b>93</b>	<b>44</b>	<b>49</b>	<b>13</b>	<b>16</b>	<b>0</b>	<b>0</b>	<b>0</b>	<b>64</b>	<b>0</b>	<b>77</b>	<b>16</b>
Summer Science Camp (EASI)	52	27	25	4	16	0	0	0	32	0	47	5
Summer Science Camp (CSI-AZ Forensics)	21	17	4	4	0	0	0	0	17	0	7	14
Tonto Creek Camp	34	20	14	4	10	0	0	0	20	0	22	12
<b>Totals (2016)</b>	<b>107</b>	<b>64</b>	<b>43</b>	<b>12</b>	<b>26</b>	<b>0</b>	<b>0</b>	<b>0</b>	<b>69</b>	<b>0</b>	<b>76</b>	<b>31</b>



# COLLABORATION BETWEEN LOCAL SCHOOL DISTRICTS AND EASTERN ARIZONA COLLEGE



Eastern Arizona College's GEAR UP program held its "Summer Camp of Champions" hosting approximately 80 middle school students representing seven school districts including Chinle, Fort Thomas, Globe, Miami, Payson, Pima, Safford, and Snowflake School Districts.

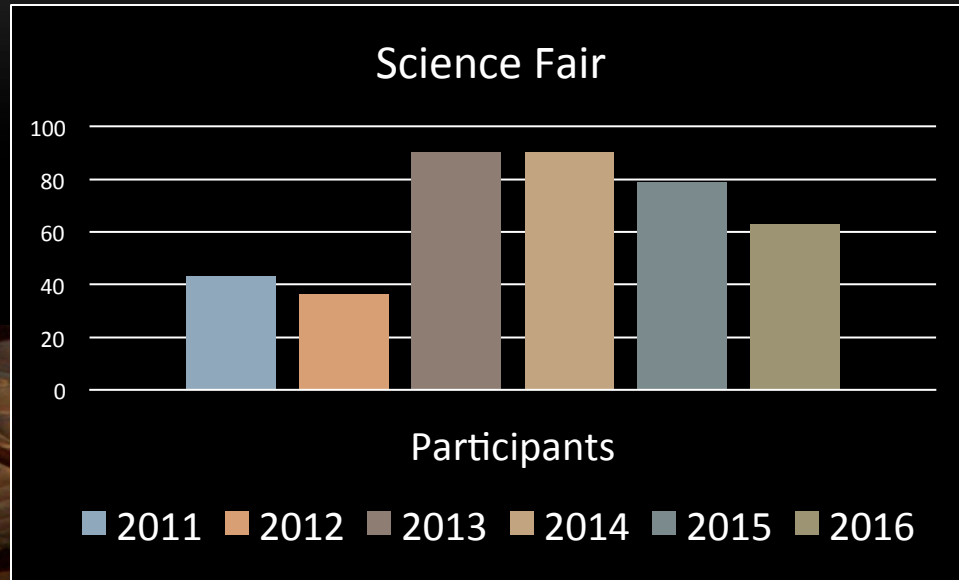
# STUDENT CHEMISTRY ADVENTURE (S=CH-A)



- Eastern Arizona College's Chemistry Department hosted the 25th Annual Student Chemistry Adventure in April.
- High school students from 7 rural high schools came together to form 17 teams for this all-day event.



# SOUTHEASTERN ARIZONA REGIONAL SCIENCE FAIR



- Spring 2011 marked the first time a Regional Science Fair was held in Graham County.

- Organized by members of the Eastern Arizona Science Initiative (EASI)





# ARIZONA SCITECH FESTIVAL

- The Arizona Science and Technology Festival celebrates Arizona's leading role in science, technology, and innovation with activities that engage, inspire and spark imagination across entire communities.
- The **Arizona SciTech Festival** is a grass-roots collaboration of over 350 organizations in industry, academia, arts, civic, community and K-12. Together these partners offer over 200 events designed to excite and inform Arizonans from ages 3 to 103 about how STEM will drive our state for next 100 years.
- Eastern Arizona College partners with Mt. Graham Regional Medical Center and the Eastern Arizona Science Initiative to host the Gila Valley Health and Science Festival.
  - We just completed our 3<sup>rd</sup> year with over 1000 participants.
  - This is truly a family affair.

# Gila Valley Health & Science Festival

---



ARIZONA SCITECH  
GILA VALLEY  
festival



**FREEPORT-McMoRAN**



SCIENCE  
foundation  
ARIZONA  
INNOVATION AT WORK



Life  Net  
ARIZONA









# A SPECIAL THANKS TO

- Eastern Arizona College
- Freeport McMoran (FMI)
- Graham County School Superintendent – Donna McGaughey
- First Things First
- University of Arizona Cooperative Extension
- Arizona State University
- Arizona Department of Education
- National Science Foundation (DUE-1400687, SFAz+8: Building Capacity for STEM Pathways in Rural Arizona)